

NUCLIAS CONNECT SOLUTION GUIDE

Nuclias Connect is an intuitive network management solution for network administrators seeking a flexible, hands-on approach to their infrastructure and user data.

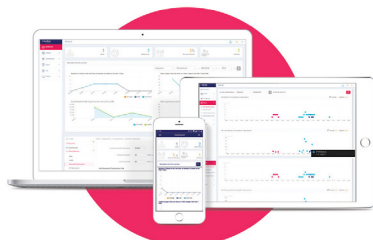
Your Network, Your Way.

Built For...

- Small-to-Medium Enterprises (SMEs)
- Corporates
- Retail Chains
- Hospitality
- Education
- Healthcare
- & More

SOFTWARE MANAGED / ON PREMISE / PRIVATE CLOUD





Scalable, feature-rich networking doesn't have to be complex. Nuclias Connect streamlines your Wi-Fi networking and switch management, handling up to 1,500 devices across multiple locations. This enables you to concentrate on your business operations while reducing complexities associated with network management.

Remote network management and monitoring with NO Subscription required.

- >> Free-to download Nuclias Connect software makes Wi-Fi provisioning management and monitoring easy
- >> Advanced real time analytics and reporting capabilities plus role and privilege based access control .

Network self healing, airtime fairness and load balancing for more uptime and less IT intervention.

- >> Free app for remote analytics, reporting, management and Access Point set up.
- >> Business class performance and reliability.
- >> Built to handle high density networks.
- >> A solution that grows with your business
- >> Add more Access Point's as you need them.

Nuclias Connect Hardware Controller (DNH-100)

- >> Pre-loaded with intuitive Nuclias management software
- >> Manage one or many sites from a single interface
- >> Access from anywhere with Single Sign on portal
- >> Supports up to 100 Devices per Hub



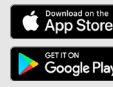
Access Points and Switches

- >> Versatile indoor and outdoor Access Points for diverse deployments.
- >> The DGS-1210 Series switches: Reliable and feature-rich for efficient network management.



Nuclias Connect App

- >> Quickly scan network and configure stand alone access points
- >> Provision access Points for Nuclias Connect
- >> View and Monitor Nuclias Connect Servers and Logs



Why Nuclias Connect?

Nuclias Connect is designed to meet the specific needs of businesses looking to :

- » Minimize network administration burden and costs.
- » Carry out Digital Transformation initiatives without unduly adding to their network administration workload.
- » Provide a robust and seamless Guest/Public Wi-Fi experience for users on par with what Enterprises can offer

Deployable on a Windows or Linux server (including Linux via Docker), the Nuclias Connect free-to-download software is capable of managing up to 1,500 Access Points (APs) or Smart Managed Switches without licensing charges, coupled with an inexpensive optional hardware controller (DNH-100 Nuclias Connect Hub) suitable for remote locations.

Who Needs Nuclias Connect?

SMBs and Enterprises

- » Offers a robust yet affordable foundation for Digital Transformation initiatives.

Retail Chains

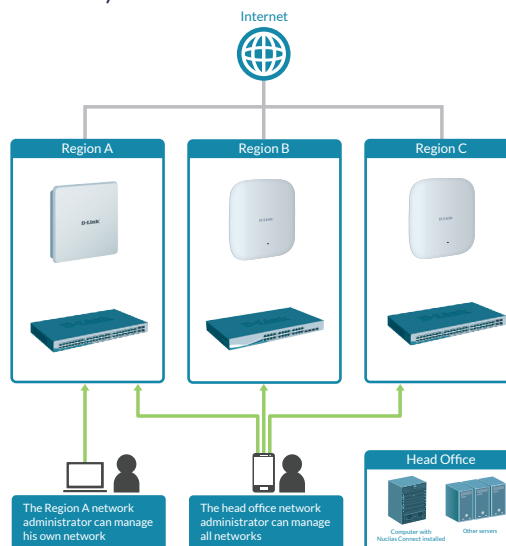
- » Provides analytics that translate into customer behavioral insights.

Hospitality

- » Helps transform your operations and provide a premium-grade Wi-Fi experience for customers.

Education

- » Offers robust Wi-Fi capability and fine-grained management control, affordably.



Through software-based monitoring and remote management of all wireless APs and switches on your network, Nuclias Connect offers tremendous flexibility compared to traditional hardware-based unified management systems. Configuration can be done remotely. Network traffic analytics are available at a glance (in whole or in part). Load Balancing, Airtime Fairness, and Localized Throttling are enabled.

Why You Want It

Nuclias Connect offers financial and technical flexibility, allowing growth from a small network to a larger one (up to 1,500 devices) while maintaining a powerful, centralized management system. Its user-friendly Graphical User Interface (GUI), advanced AP features, and multilingual setup wizard (supporting 11 languages) simplify deployment, configuration, and administration tasks.

Value

Nuclias Connect delivers exceptional value. Our Access Points (APs) and Smart Managed Switches come without licensing fees. The management software is freely downloadable to any compatible PC, and it is backwards-compatible with a wide array of legacy and new D-Link APs and network switches. The Nuclias (DNH-100) hardware controller is cost-effective, while still offering a comprehensive feature set that lowers administrative expenses and is suitable for a majority of business networking activities.

Advantages

- » Install management software on multiple terminals without restrictions.
- » Economical network expansion with centralized configuration and license-free Access Points and Smart Managed Switches (up to 1,500 devices).
- » Affordable network administration enabled by user-friendly, free-to-download software or the budget-friendly Nuclias (DNH-100) hardware controller.

Flexibility

Nuclias Connect provides the adaptability to excel in diverse deployment situations, commercial requirements, and applications. An extensive range of Access Points and Smart Managed Switches (with or without PoE) cater to different conditions and pricing tiers. The versatile management software allows for broad or precise control and analytics, with data display in multiple formats.

Advantages

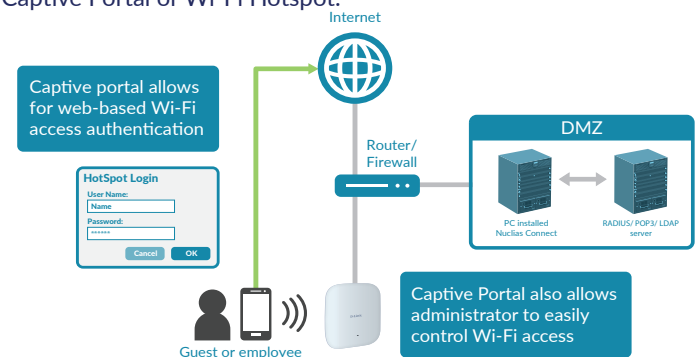
- » Adaptable for deployments in diverse environments.
- » Network management achievable from any location with internet access.
- » Personalized public Wi-Fi login featuring your logo.
- » Customizable display, analytics, reporting, and management for practicality and ease.
- » Multi-tenant management capability within the software.

Nuclias Connect: Empowering Admins

Nuclias Connect supports multi-tenancy, so network admins can grant localised management authority for local networks. In addition, because APs can support 8 SSIDs per radio (16 SSIDs per dual-band AP), administrators have the option of using one SSID to create a guest network for visitors.

Nuclias Connect provides direct device discovery and provisioning when it shares the same Layer-2/Layer-3 network with a given device. This allows users to find devices and import profiles with minimum effort, which can be applied as needed to groups or individual devices for even more effective configuration.

Nuclias Connect accommodates multiple user authentications while facilitating unique access control configurations for each SSID. This grants admins the ability to set up distinct internal networks for different subnets while providing advanced Value-Added Services, like Captive Portal or Wi-Fi Hotspot.



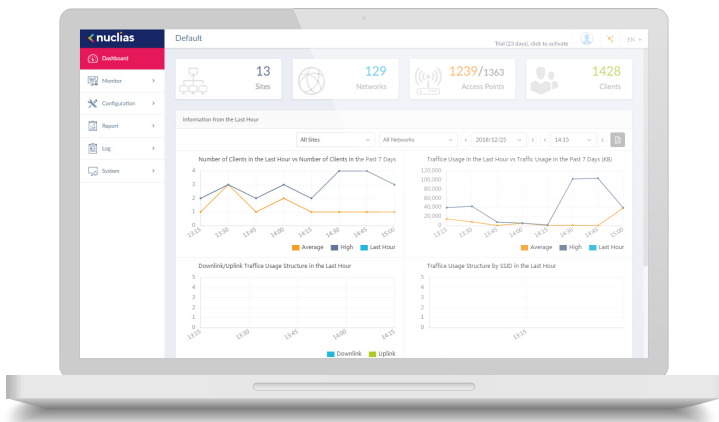
As Nuclias Connect's software runs unobtrusively on the network, a device can be deployed anywhere within a NAT environment. Admins can implement and manage various distributed deployments, including the establishment and configuration of admin accounts for each deployment.

Real-Time Analytics & Automated Reporting

Nuclias Connect delivers a comprehensive understanding of your network and its users through in-depth traffic analytics and status reports, easily accessible for review. Insights obtained from this traffic data can help optimize network performance and enhance user experience. Traffic monitoring spans the entire network, extending down to the level of an individual Access Point.

Advantages

- » Obtain network visibility to assess traffic, capacity and growth.
- » Acquire actionable intelligence from analytics, enabling businesses to take informed actions.
- » Gather insights about customers/users.
- » Simplify troubleshooting.



Security & Privacy

Nuclias Connect is built for businesses where security and privacy really matter. It helps secure all communications with WPA2 or WPA3 encryption. Plus, adding extra security layers like firewalls is hassle-free.

Advantages

- » Robust encryption: WPA2 or WPA3.
- » Privacy protection: On Premise (data remains on site). Keep user data private.
- » Easy integration: Hassle-free addition of security layers.

D-Link and the D-Link logo are trademarks or registered trademarks of D-Link Corporation and/or its subsidiaries in the United States and other countries. All other company or product names mentioned herein are trademarks or registered trademarks of their respective companies.
© 2023 D-Link Corporation/D-Link Systems, Inc.

Updated 5/01/2023
NUCLIAS CONNECT GUIDE

Ease-of-Use

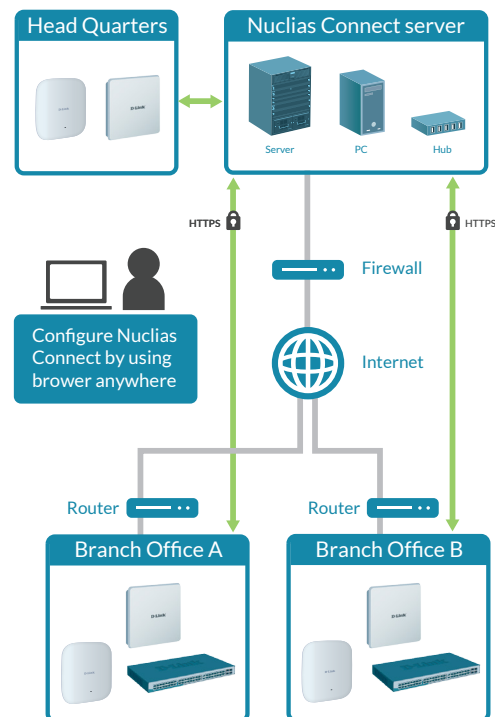
Nuclias Connect's centralized management features, simple setup, and user-friendly dashboard streamline tasks for network administrators, while its functionality enhances the experience for network users.

Advantages

- » Customization options reduce the need for extensive navigation within the software.
- » Accessible from anywhere with an internet connection for convenience.
- » Centralized configuration minimizes error possibilities.
- » Multi-tenancy support: Allows network admins to grant localized management authority for different networks.
- » Time-saving features include batch configuration, automated network management & reporting, and searchable & auditable Event and Change logs.
- » Various authentication choices (Captive Portal, RADIUS Server, POP3, LDAP, AD) simplify efforts.

Benefits to Guest Users

- » Easy and secure guest access with dedicated SSID's
- » Payment Gateway Integration with the Captive Portal.
- » Consistent network performance with Airtime Fairness & Load Balancing.
- » Front-desk Ticket Management for greater convenience.



Call or visit us online for more information on the complete line of D-Link Business Solutions

USA 888.354.6572 option 2 | us.dlink.com/business | email: solutions@us.dlink.com

Canada 800.354.6522 | dlinkforbusiness.ca | email: dlinkforbusiness@dlink.ca

Wireless Access Points	    				
	DAP-2610	DAP-2682	DAP-X2810	DAP-X2850	DAP-3666
Management					
 nuclias Connect	✓	✓	✓	✓	✓
Standalone Management (WebGUI)	✓	✓	✓	✓	✓
Access Points Features					
Environment	Indoor	Indoor	Indoor	Indoor	Outdoor (IP68 Rating)
Operating Temperature	32°F to 104°F (0°C to 40°C)	32°F to 104°F (0°C to 40°C)	32°F to 104°F (0°C to 40°C)	32°F to 104°F (0°C to 40°C)	-22°F to 140°F (-30°C to 60°C)
Dimensions	6.69 x 6.69 x 1.1in (170 x 170 x 28 mm)	7.48 x 7.48 x 1.17in (190 x 190 x 43.7 mm)	6.69 x 6.69 x 1.3in (170 x 170 x 33.7 mm)	8.36 x 8.36 x 1.8in (212.4 x 212.4 x 46.7 mm)	10.91 x 9.45 x 1.97in (277 x 240 x 50 mm)
Wireless Standard (IEEE)	802.11a/b/g/n/ac Wave 2	802.11a/b/g/n/ac Wave 2	802.11ax Wi-Fi 6 802.11a/b/g/n/ac Wave2	802.11ax Wi-Fi 6 802.11a/b/g/n/ac Wave2	802.11a/b/g/n/ac Wave 2
MIMO	2x2	4x4	2x2	4x4	2x2
Wi-Fi Speed (2.4 GHz)	400 Mbps	600 Mbps	600 Mbps	1200 Mbps	300 Mbps
Wi-Fi Speed (5 GHz)	867Mbps	1700 Mbps	1200 Mbps	2400 Mbps	867 Mbps
Number of SSID's	16 (8 per band)	16 (8 per band)	16 (8 per band)	16 (8 per band)	16 (8 per band)
Ethernet Interface	1 x Gigabit Ethernet	2 x Gigabit Ethernet	1x Gigabit Ethernet	1x 2.5 Gigabit Ethernet 1x Gigabit Ethernet	2 x Gigabit Ethernet
Power over Ethernet (PoE)	Yes (802.3af) PoE	Yes (802.3at) PoE+	Yes (802.3at) PoE+	Yes (802.3at) PoE+	Yes (802.3af) PoE
Max Output Power	2.4 GHz: 23 dBm 5 GHz: 23 dBm	2.4 GHz: 28 dBm 5 GHz: 28 dBm	2.4 GHz: 28 dBm 5 GHz: 26 dBm	2.4 GHz: 28 dBm 5 GHz: 25.5 dBm	2.4 GHz: 26 dBm 5 GHz: 26 dBm
Antenna Type	Internal Omni-Directional	Internal Omni-Directional	Internal Omni-Directional	Internal Omni-Directional	Internal Omni-Directional
Antenna Gain	2.4 GHz: 3 dBi 5 GHz: 3 dBi	2.4 GHz: 3.7 dBi 5 GHz: 4.8 dBi	2.4 GHz: 3.2 dBi 5 GHz: 4.2 dBi	2.4 GHz: 3.5 dBi 5 GHz: 5.5 dBi	2.4 GHz: 6 dBi 5 GHz: 6 dBi
Mounting Type	Ceiling/Wall/Desktop ¹	Ceiling/Wall/Desktop ¹	Ceiling/Wall/Desktop ¹	Ceiling/Wall/Desktop ¹	Wall/Pole ¹
Security Lock	✓	✓	✓	✓	✓
Wireless & Network Features					
AP Mode/WDS/WDS with AP	✓ ²	✓ ²	✓ ²	✓ ²	✓ ²
Wireless Client Mode	✓ ²	✓ ²			✓ ²
Wi-Fi Scheduler (Green)	✓	✓	✓	✓	✓
AP Traffic Load Balance	✓	✓	✓	✓	✓
Automatic RF Optimization	✓	✓	✓	✓	✓
Band Steering Beamforming	✓	✓	✓	✓	✓
Seamless Roaming (Nuclias Connect)	✓	In Future Release	✓	✓	In Future Release
Mu-MIMO	✓	✓	✓	✓	✓
Security/Encryption					
Captive Portal	✓ ³	✓ ³	✓ ³	✓ ³	✓ ³
Access Control	✓	✓	✓	✓	✓
SSID to VLAN Mapping	✓	✓	✓	✓	✓
WPA/WPA2/WPA3 Personal /Ent WPA3 SAE/OWE/Enterprise	✓	✓ WPA3 Future Release	✓	✓	✓ WPA3 Future Release
Warranty					
Warranty	Limited Lifetime	Limited Lifetime	Limited Lifetime	Limited Lifetime	Limited Lifetime

1. Mount and T-Bar Kit included for Indoor and Pole and Wall Mount Kit included for Outdoor. 2. WDS/WDS with AP and Client Mode available in Standalone Mode only.
3. Captive Portal (Web Redirection, Username/Password, Passcode, Remote RADIUS, LDAP, POP3, more)
Social Login, Paypal and Click-through only available when managing with Nuclias Connect

1210 - Series Smart Managed Gigabit Switches

(Hardware Revision F1 or later)



		DGS-1210-52MP	DGS-1210-52	DGS-1210-28MP	DGS-1210-28P	DGS-1210-28
	Layer	L2+	L2+	L2+	L2+	L2+
1 GbE:	10/100/1000 (RJ45)	48	48	24	24	24
	Combo (RJ45/SFP)	4	4	4	4	4
	PoE + (802.3at)	Ports 1-48 (30W)	–	Ports 1-24 (30W)	Ports 1-24 (30W)	–
	Total PoE Power Budget	370W	–	370W	193W	–
	Power Supply	Internal	Internal	Internal	Internal	Internal
	Rack Mountable	Yes	Yes	Yes	Yes	Yes
	Fans	(3) Smart Fans	No fans	(2) Smart Fans	(2) Smart Fans	No fans

1210 - Series Smart Managed Gigabit Switches

(Hardware Revision F1 or later)



		DGS-1210-26	DGS-1210-10MP	DGS-1210-10P	DGS-1210-10
	Layer	L2+	L2+	L2+	L2+
1 GbE:	10/100/1000 (RJ45)	24	8	8	8
	Optical (SFP)	2	2	2	2
	PoE + (802.3at)	–	Ports 1-8 (30W)	Ports 1-8 (30W)	–
	Total PoE Power Budget	–	130W	65W	–
	Power Supply	Internal	Internal	External	External
	Rackmountable	Yes	Yes	Yes	Yes
	Fans	No fans	No fans	No fans	No fans
	Warranty	Lifetime	Lifetime	Lifetime	Lifetime

Nucias Connect Management



DNC-100 (FREE DOWNLOAD)

DNH-100

Type	Nucias Connect Software Controller	Hardware Controller
Supported Devices (Access Point, Switch)	1500	100
Interface	–	1 x Gigabit Port
Storage	–	16Gb microSD (Included)
Single Sign-On	✓	✓
Automatic Device Discovery	✓	✓
Multi-Tenant & Role Based Administration	✓	✓
Profile Based Device Management	✓	✓
Traffic Reporting & Analytics (Peak, hourly, daily activity)	✓	✓
Searchable & Auditable Event & Change Logs	✓	✓
Topology Map and Floor Plan	✓	✓
Centralized Device Firmware Upgrade	✓	✓
Nucias Connect App	✓ (iOS/Android)	✓ (iOS/Android)

Wireless Accessories



AC Power Adapter

PSE - M12V25A-1

Optional 12 V 2.5A AC Power Adapter
for DAP Access Points

Warranty: 1 Year

BUILDING RELIABLE NETWORKS FOR OVER 35 YEARS

For product recommendations and more information on the complete line of business products, call or email our sales team:
USA: 888.354.6574 | Email: solutions@us.dlink.com | Canada: 800.354.6522 | Email: dlinkforbusiness@dlink.ca

D-Link®
FOR BUSINESS